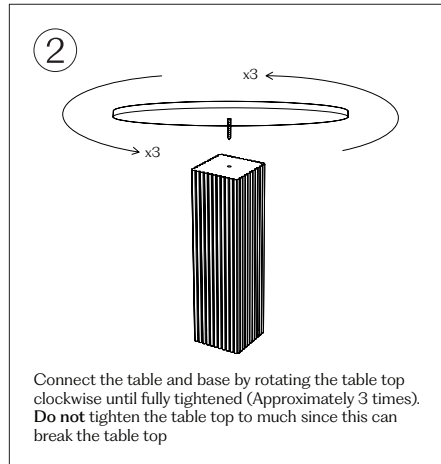
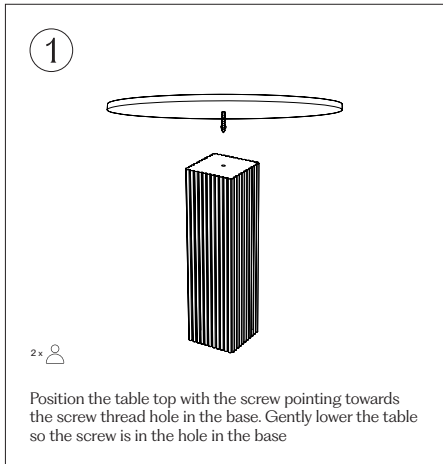


SOHO DINING TABLE 80, 120 & 140 CM

Assembly Instruction

Due to the weight of the product and the fragility of the material, it is recommended to be at least 2 people when assembling the table. Ideally a 3rd person for guiding.



Caution: DO NOT LIFT THE TABLE TOP.
When moving the table please dismount the table and move the base and table top separately.

Do not overtighten the table. When the table top is aligned with the base, do not tight anymore.